

Pricing of Ross Ridge Homes~ Phase One

These Home Plans are only some of the possibilities for your beautiful home in our Ross Ridge Community. We welcome any modifications to our plans, and are glad to review any plans you have.

Pricing is subject to final blueprint design. Prices include house and land on specific lots.

*** Prices are subject to change in Phase Two.*

You may choose from a variety of home designs - Colonials, Ranches, and Capes just to name a few... The following are a few of the homes we have designed to date.



THE THORTON

Sale Price: \$289,900.00

Finished living area: 1,534 sq. ft.

Features: 3 BRs, 2 BA.

Convenient one floor living, amazing kitchen opened to dining and living room, Master BR suite, two covered porches and a two-car garage.



THE SHEPLEY

Sale Price: \$295,900.00

Finished living area: 1,960 sq. ft.

Features: 3 BRs, 2.5 BA.

Fabulous open kitchen, dining and living room. Kitchen pantry, mudroom, den, Master BR suite, laundry room on 2nd floor and a two-car garage.



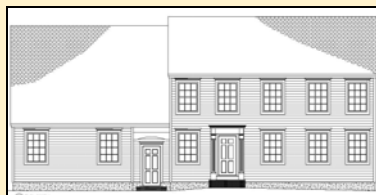
THE WINTER HARBOR

Sale Price: \$300,900.00

Finished living area: 1,880 sq. ft.

Features: 3 BRs, 1.5 BA.

Wonderful open dining, kitchen and family room. Kitchen pantry, den, 2nd floor laundry, covered front porch and 386 sq. ft. of future space above two-car garage.



THE HOBSON

Sale Price: \$310,900.00

Finished living area: 1,848 sq. ft.

Features: 3 BRs, 2.5 BA. Great open kitchen, dining and family room. Foyer with closet, kitchen pantry, Master BR suite, laundry on the 2nd floor and 467 sq. ft. of future space above two-car garage.



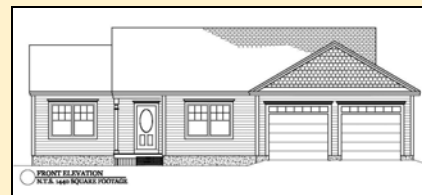
THE GOOSEFARE

Sale Price: \$299,900.00

Finished living area: 1,903 sq. ft.

Features: 3 BRs, 1.5 BA.

Remarkable open kitchen, dining and living room. Den, mud room, laundry on the 1st floor and a two-car garage.



THE PEPPERELL

Sale Price: \$274,900.00

Finished living area: 1,452 sq. ft.

Features: 3 BRs, 2 BA. One floor living; spacious and well designed. Large great room off the kitchen. Master Bedroom suite. Two-car garage.

Each Ross Ridge Home is priced with allocated allowances to give you the freedom to personalize every aspect of your home. From cabinetry to flooring to landscaping, your home will reflect your lifestyle.

Revised August 18, 2010



A Chamberlain Homes Community

1022 Portland Road, Saco, Maine 04072 | tel 207.282.7377

RossRidgeHomes.com